

EXETER HALL



Situated in Vancouver's historic Point Grey neighbourhood, one community stands in a class of its own. An alluring juxtaposition between UBC's bustling campus life and breathtaking naturescape, Exeter Hall by Polygon offers a master class in balance. From its thoughtful floorplans and urban amenities to the artful architecture and panoramic views, every detail adds to the esteem of this world-class location.

Breathtaking backdrop, serene living.

Discover a stylish collection of contemporary homes in the University of British Columbia's Wesbrook Village, where life seamlessly blends urban vibrancy with serene beauty.



Artist's rendering only



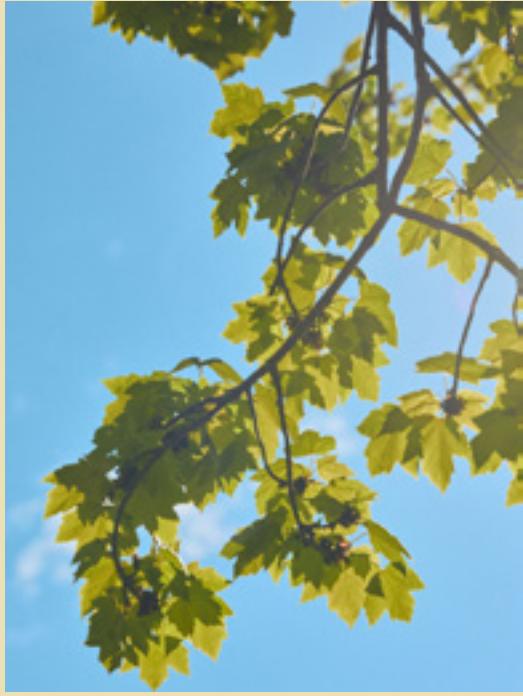
A community at the top of its class.

Located in the heart of a vibrant masterplanned community surrounded by a scenic tapestry of expansive greenery, Exeter Hall offers the rare privilege of feeling both interconnected and instantly removed. Stroll to neighbouring shops and restaurants, enrich your routine at the UBC Aquatic Centre, the Chan Centre for the Performing Arts or other renowned attractions, or simply enjoy quick commutes to other notable neighbourhoods such as Kerrisdale, Kitsilano and Yaletown.



UBC

UBC is a world-class university, ranking among the top nationally and globally. In addition to its rich history and esteemed reputation, UBC offers a diverse community, with six distinct residential neighbourhoods and a dynamic array of lifestyle amenities.



Wesbrook Village

Located on the southern point of UBC's Point Grey campus, Wesbrook Village is a sustainable, mixed-use community designed with a strong focus on residents' well-being. With a vibrant mix of restaurants, cafés, shops, parks, water features, greenways and community gathering spaces, Wesbrook Village offers a world of comfort and convenience. Wonder awaits in this neighbourhood, where parks, forest trails, gardens and beaches are all accessible on foot, providing an instant connection to Mother Nature whenever you need it most.



A one-of-a-kind community.

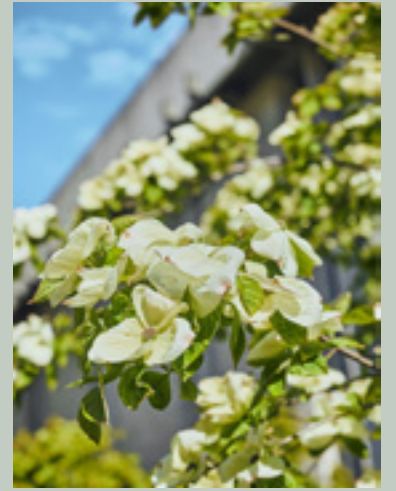
-  Previous Polygon Communities
- 1 Browns Craffhouse
- 2 Doughgirls Comfort Kitchen & Bakeshop
- 3 Freshii
- 4 Jamjar Canteen
- 5 Kinton Ramen
- 6 Mercante
- 7 Morris and Helen Belkin Art Gallery
- 8 Mundell Park
- 9 Murchie's Fine Tea
- 10 Nitobe Memorial Garden
- 11 Nicli Antica Pizzeria
- 12 Nobel Park
- 13 Norma Rose Point School
- 14 Rashpal Dhillon Track & Field Oval
- 15 Save-On-Foods
- 16 Shoppers Drug Mart
- 17 Steve's Poké Bar
- 18 Togo Sushi
- 19 UBC Bookstore
- 20 UBC Farmers' Market
- 21 UBC Rose Garden
- 22 UBC Sport and Exercise Medicine Clinic
- 23 UNA Community Field
- 24 University Hill Secondary School
- 25 University Village Medical & Dental Clinic
- 26 University Village Shopping
- 27 VNYSYA Yoga Studio
- 28 Wesbrook Community Centre





An array of academic excellence.

At Exeter Hall, you'll find yourself at the epicentre of higher learning with top schools at your fingertips. Whether elementary, secondary, university or beyond, there's no shortage of well-respected institutions to foster a successful future. Outstanding private schools such as Little Flower Academy, York House, Crofton House and St. George's are all just a short drive away.



Enviably amenities that balance urban comforts and calming nature.

At Exeter Hall, the seamless connection between city and nature is also reflected in the amenities. A meticulously landscaped courtyard leads you to a distinctive entry canopy, while outdoor spaces invite you to work, gather or retreat. Just steps from the overheight lobby is a residents' lounge for social gatherings, and a fitness studio for convenient workouts.



Artist's rendering only





Artist's rendering only



Artful architecture, distinguished design.

Designed by GBL Architects, Exeter Hall consists of a 16-storey high-rise and a collection of eight cityhomes, where every line and curve are purposefully sculpted to enhance the overall esthetic of the surroundings. Thoughtful floorplans boast functionality, style and views of the Salish Sea, the North Shore mountains and surrounding green spaces.





Modern interiors to make the most of your space.

Every aspect of life at home is designed for maximum enjoyment. From generous decks and ceiling heights to thoughtful touches around every corner, interiors at Exeter Hall are simply superior.



Design highlights include:

- Modern wood veneer entry door and custom plaque for all tower suites
- In-suite heat pump system, easily adjusted inside your home
- Premium engineered wood flooring throughout main living spaces and bedrooms
- Two designer-selected colour schemes offer customization to suit your style and furniture
- A walk-in closet in the main bedroom features custom shelving, drawers and lighting to keep your wardrobe organized
- Energy-efficient large low-E glazed windows provide light-filled interiors and views of surrounding greenery, the North Shore mountains and the Salish Sea



Stylish, chef-ready kitchens.

Designed to inspire, every thoughtful detail goes a long way to make entertaining and meal prep simpler, including:

- Luxury brand-name appliances inspire your inner gourmet chef
- Custom natural wood or matte white cabinetry with LED under-cabinet lighting and soft-closing drawers provide significant storage in style
- Refined engineered stone countertops are complemented by an impressive full-height backsplash
- Seamlessly integrated premium appliances

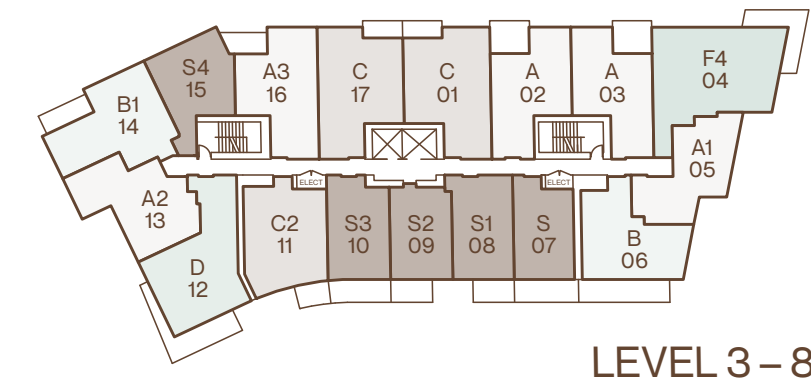
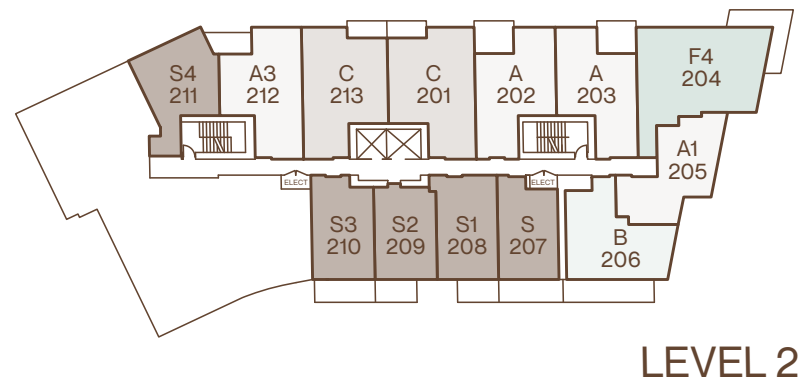
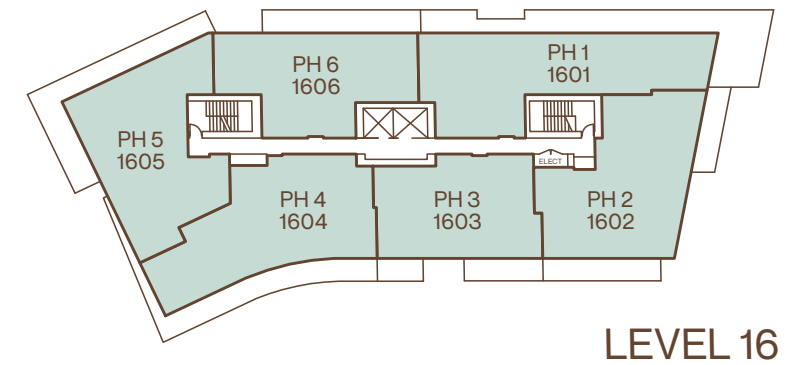
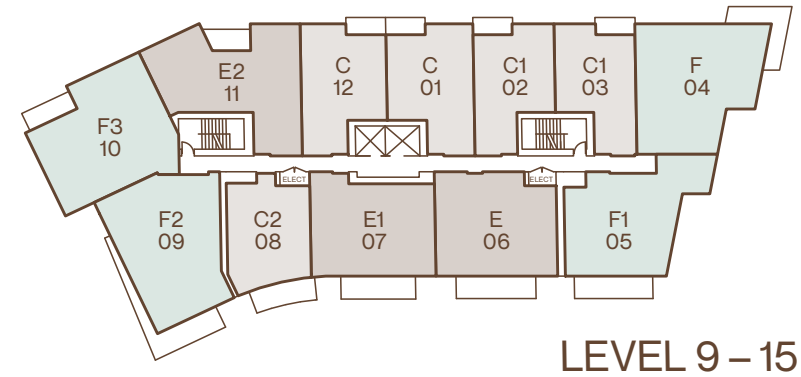
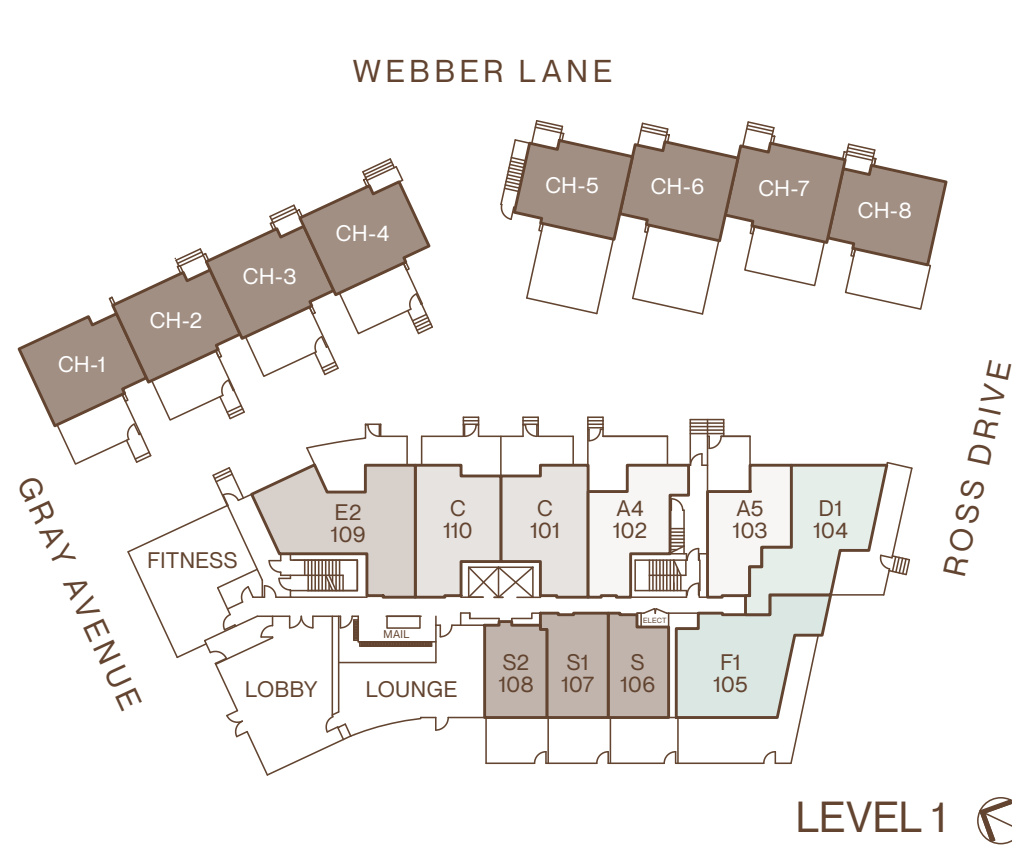
Tranquil ensuites for everyday elegance.

Relax and restore daily with graceful, hotel-inspired touches in the main ensuite – beautifully designed, with imported engineered stone countertops, floating cabinetry and a rain shower.



EXETER HALL

Building Plan



A A SERIES
1 BEDROOM
APPROX. 507 - 598 SF

B B SERIES
CORNER 1 BEDROOM
APPROX. 567 - 596 SF

C C SERIES
1 BEDROOM + DEN
APPROX. 601 - 645 SF

D D SERIES
CORNER 1 BEDROOM + DEN
APPROX. 685 - 780 SF

E E SERIES
2 BEDROOM /
2 BEDROOM + DEN
APPROX. 818 - 928 SF

F F SERIES
CORNER 2 BEDROOM
APPROX. 804 - 1,016 SF

S G SERIES
STUDIO
APPROX. 393 - 473 SF

PH PENTHOUSE SERIES
2 BEDROOM + DEN /
3 BEDROOM
APPROX. 1,107 - 1,489 SF

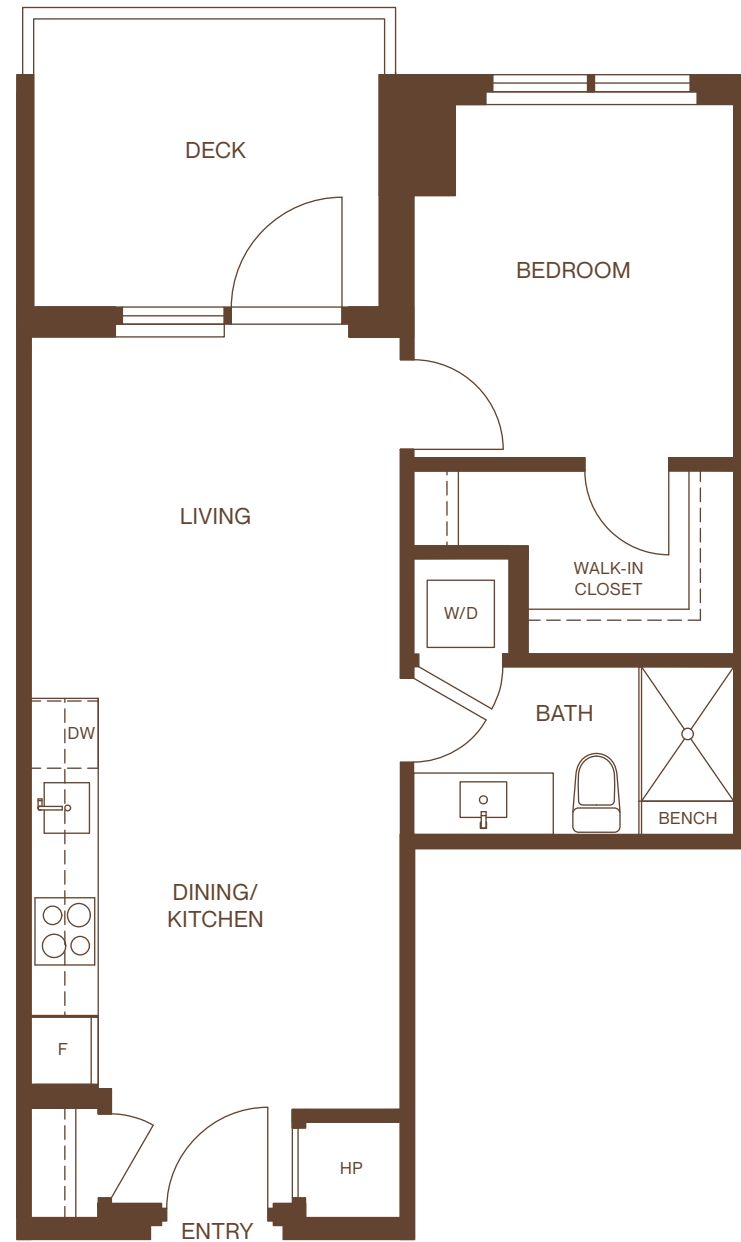
CH CITYHOME SERIES
3 BEDROOM
APPROX. 1,552 - 1,570 SF

EXETER HALL

A

1 Bedroom
1 Bathroom

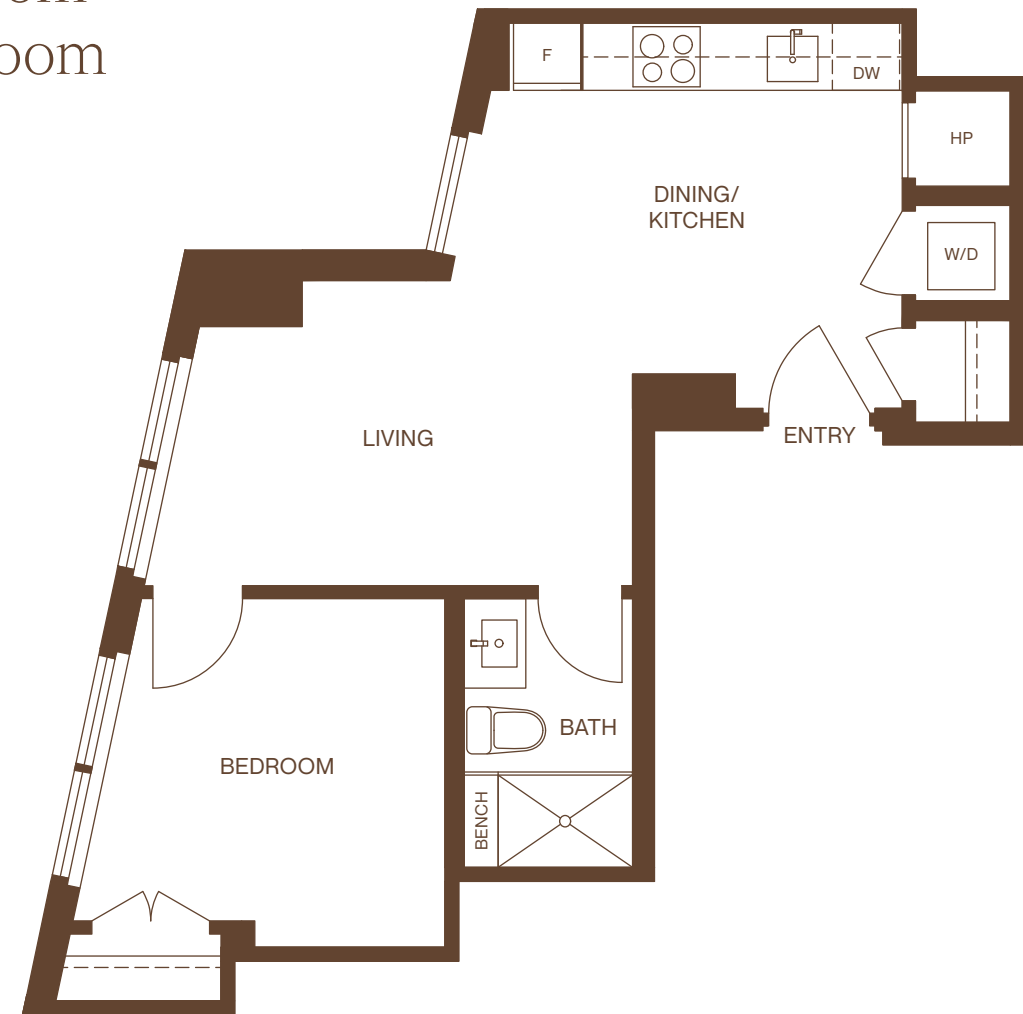
Approx: 557 SF



A1

1 Bedroom
1 Bathroom

Approx: 507 SF

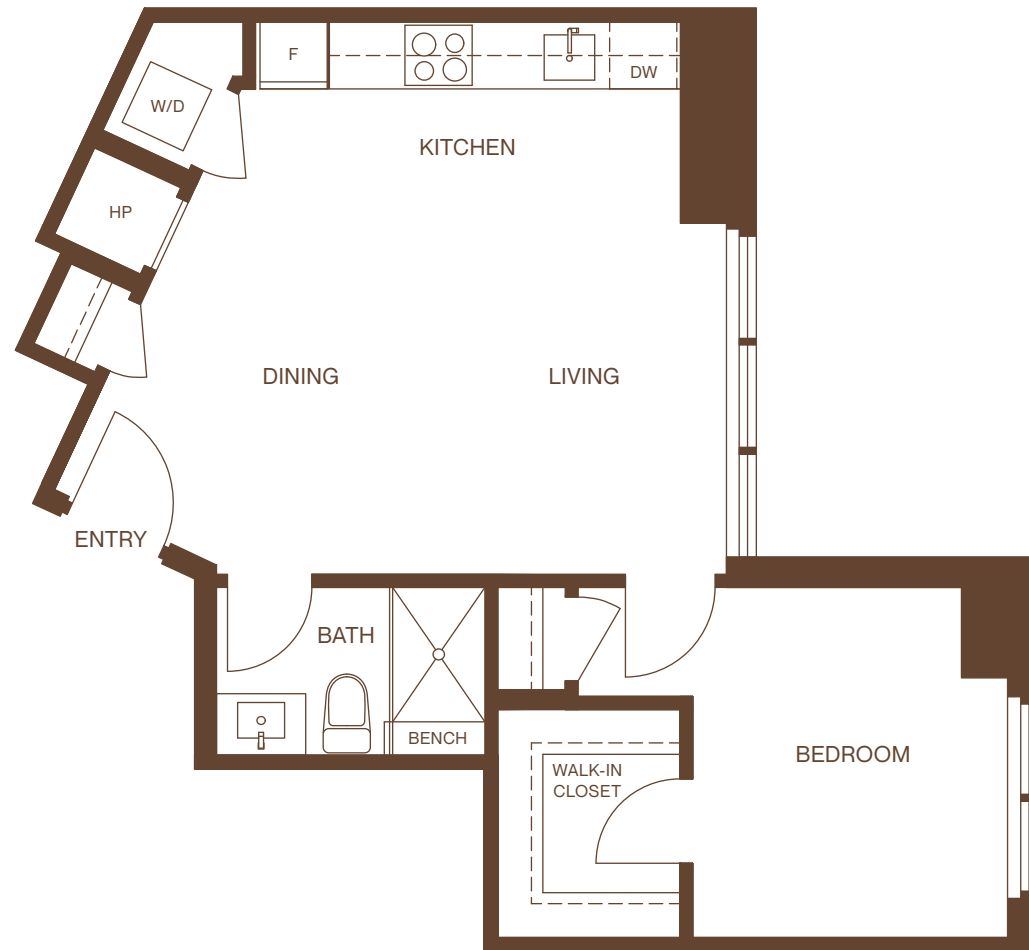


EXETER HALL

A2

1 Bedroom
1 Bathroom

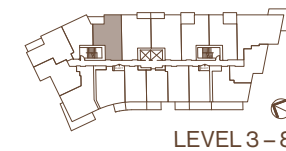
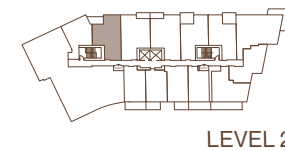
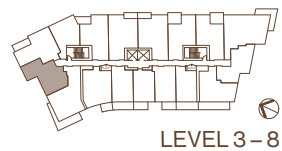
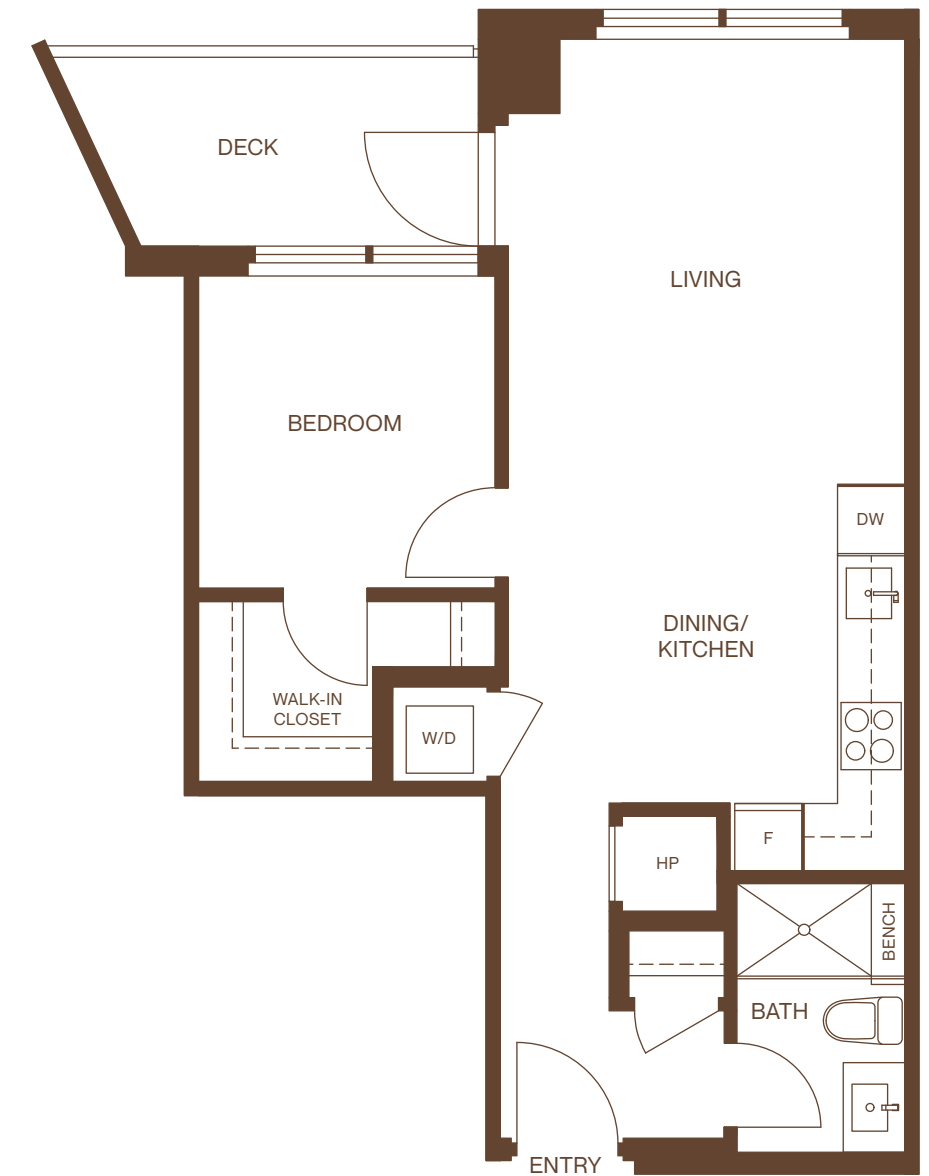
Approx: 574 SF



A3

1 Bedroom
1 Bathroom

Approx: 585 SF

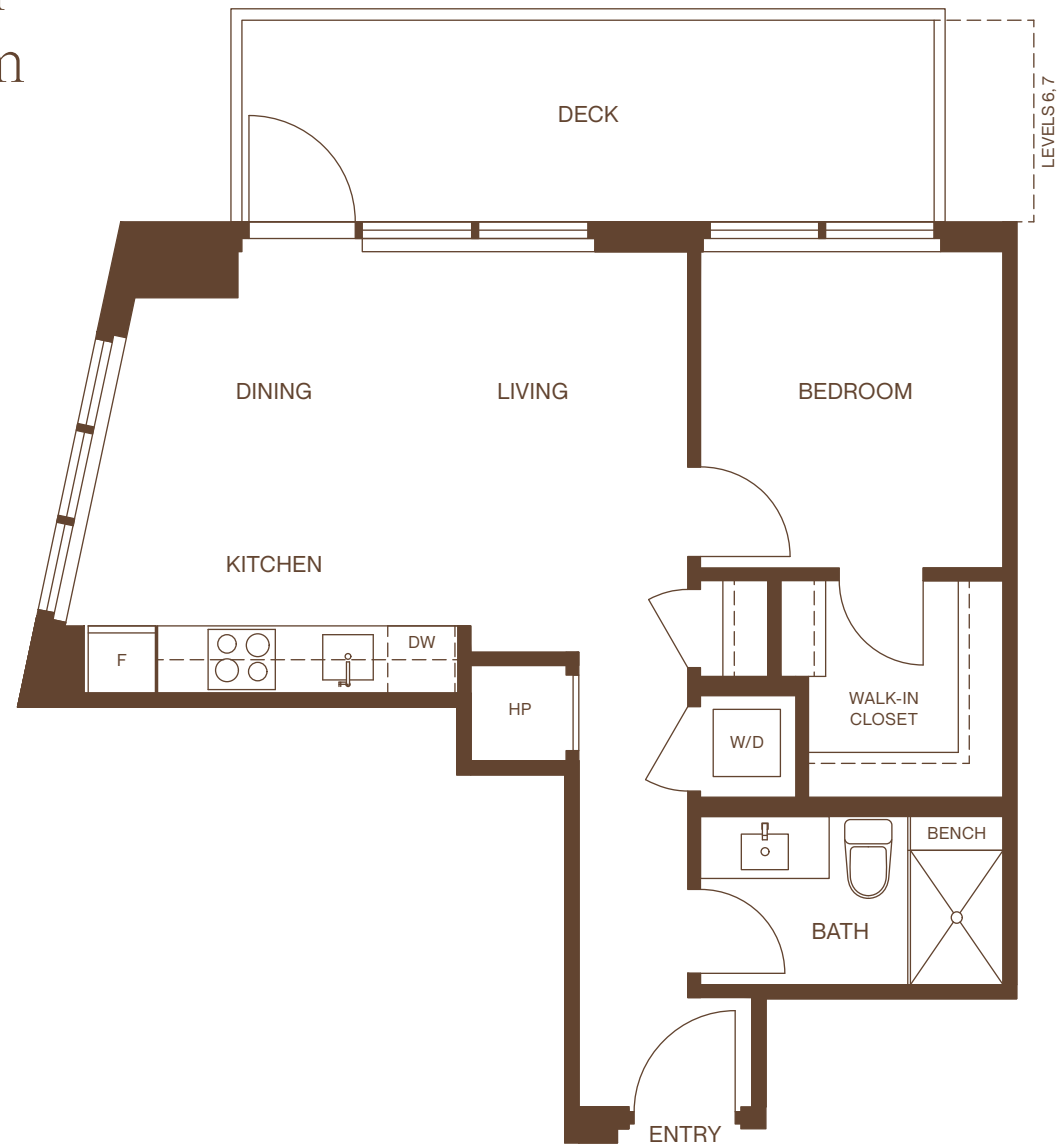


EXETER HALL

B

1 Bedroom
1 Bathroom

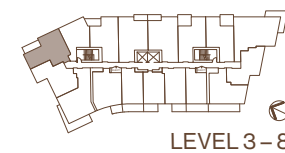
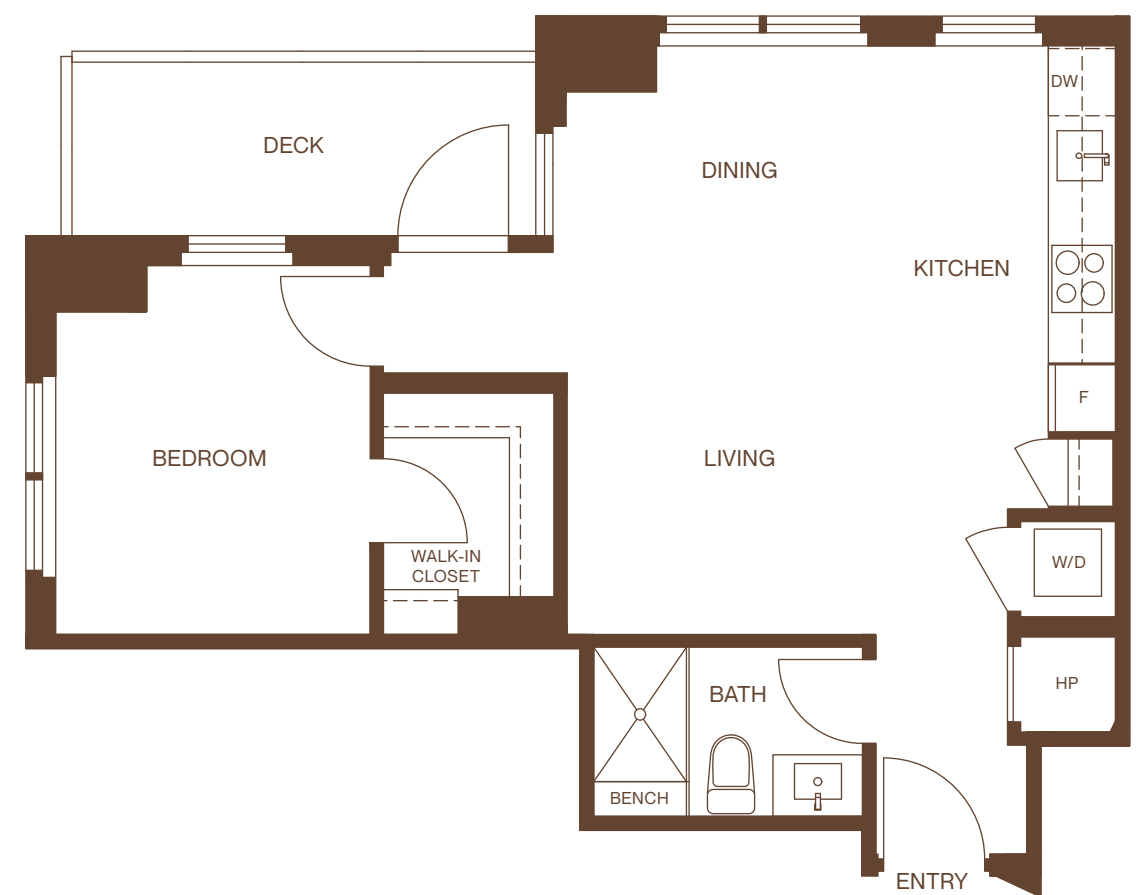
Approx: 567 SF



B1

1 Bedroom
1 Bathroom

Approx: 596 SF

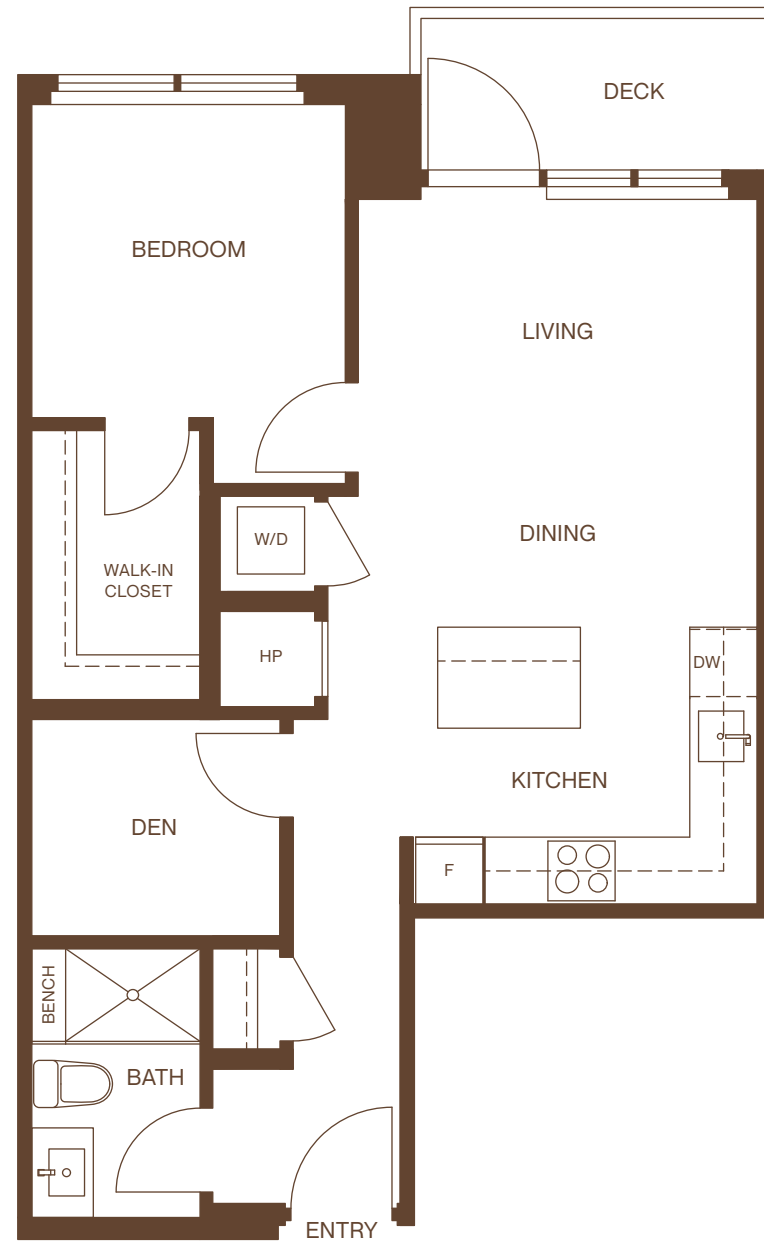


EXETER HALL

C

1 Bedroom + Den
1 Bathroom

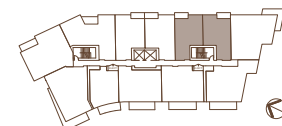
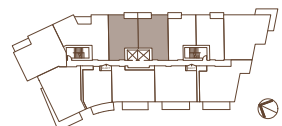
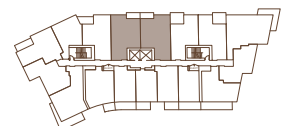
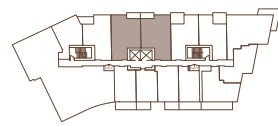
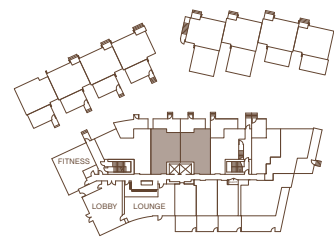
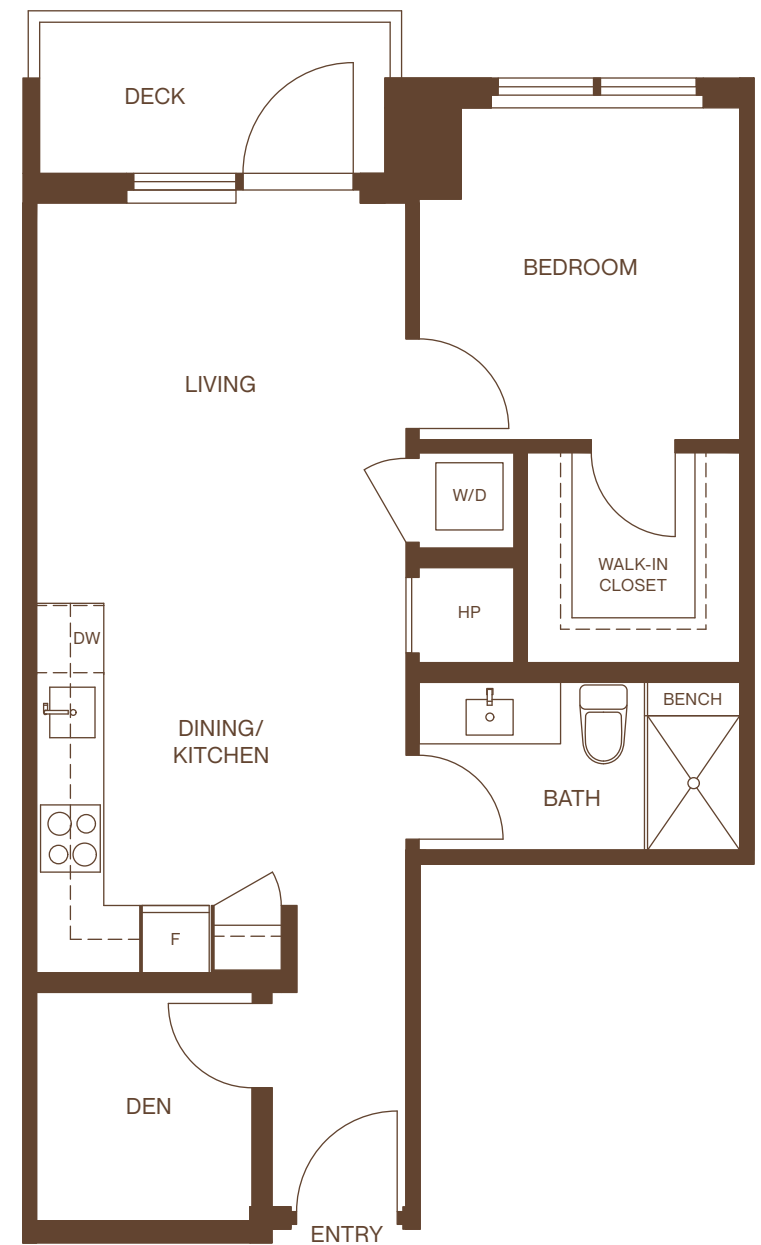
Approx: 640 – 645 SF



C1

1 Bedroom + Den
1 Bathroom

Approx: 601 SF

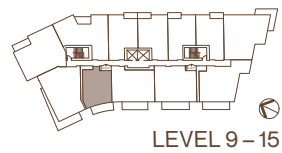
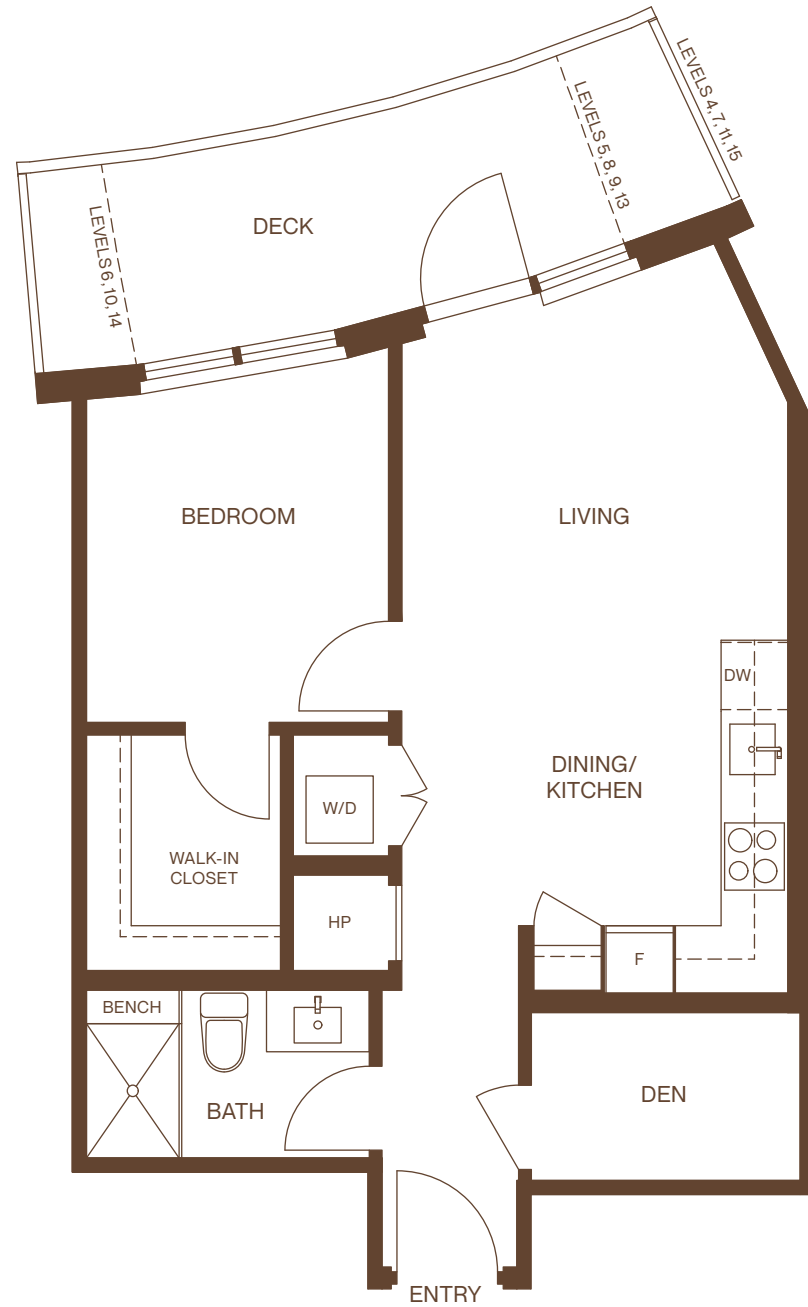


EXETER HALL

C2

1 Bedroom + Den
1 Bathroom

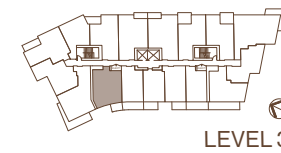
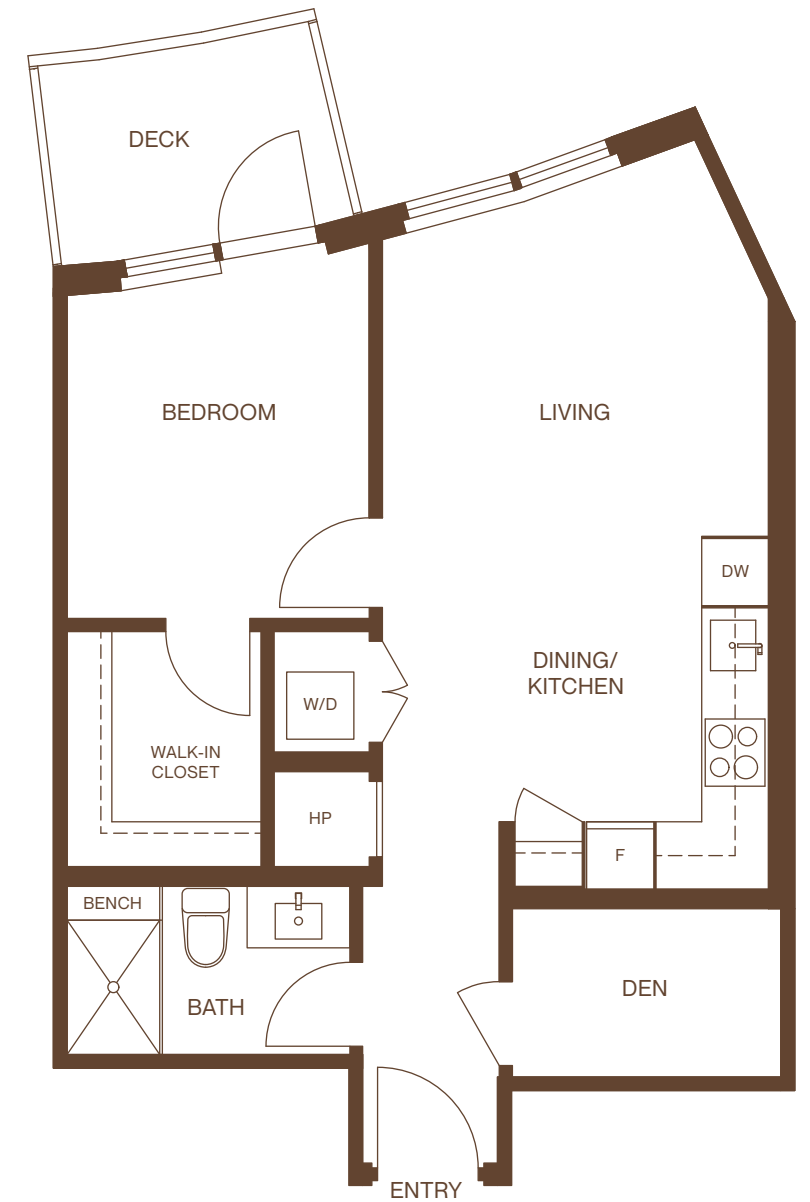
Approx: 613 SF



C2 Home 311

1 Bedroom + Den
1 Bathroom

Approx: 613 SF

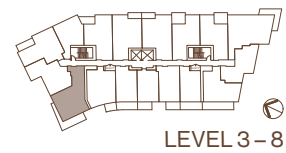


EXETER HALL

D

1 Bedroom + Den
1 Bathroom

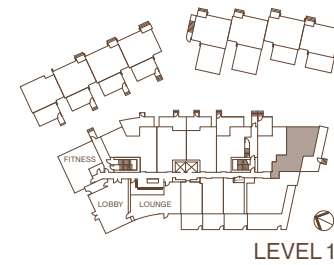
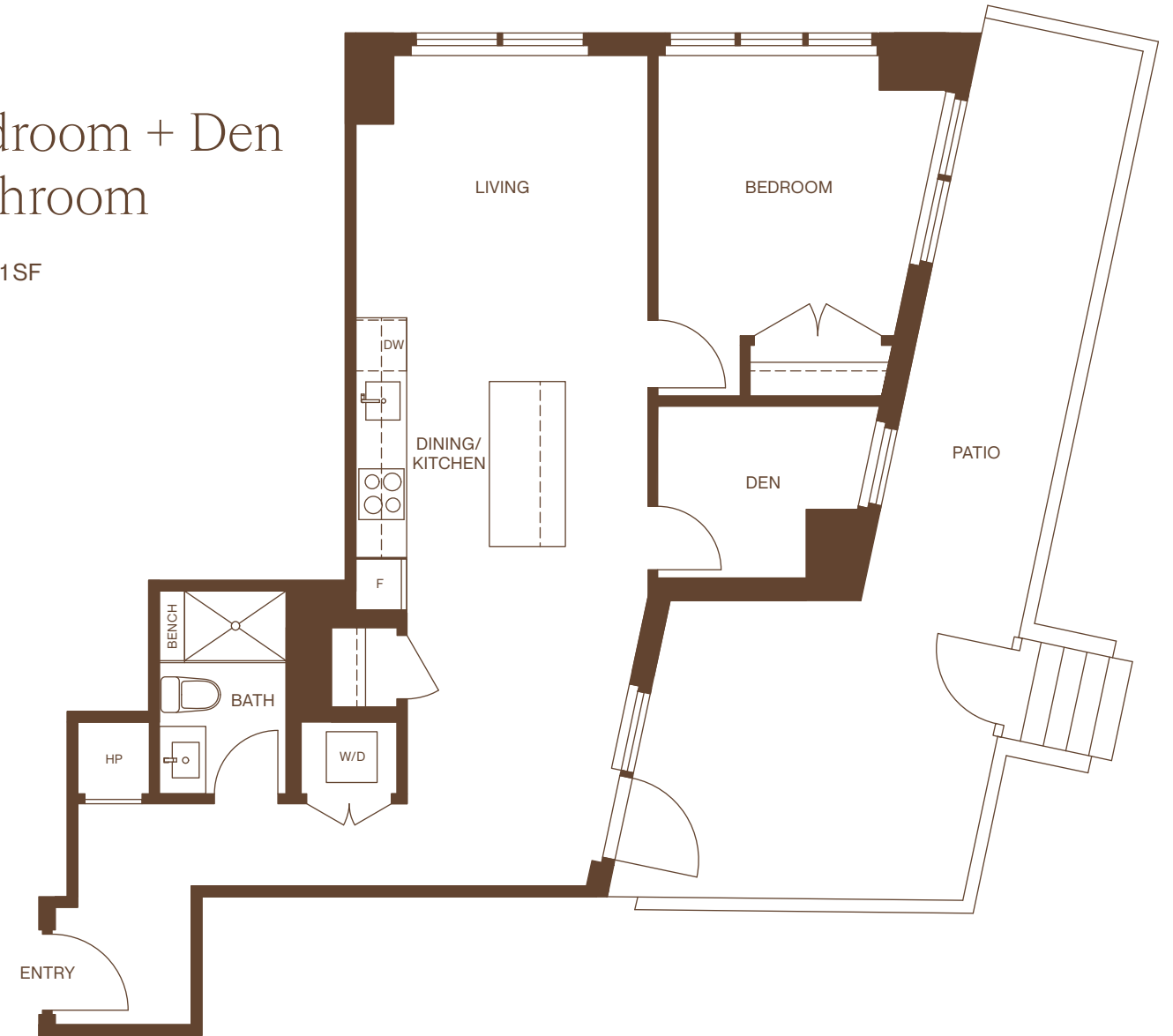
Approx: 685 SF



D1

1 Bedroom + Den
1 Bathroom

Approx: 781 SF

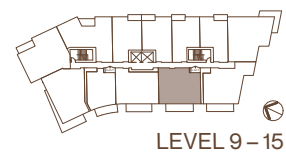
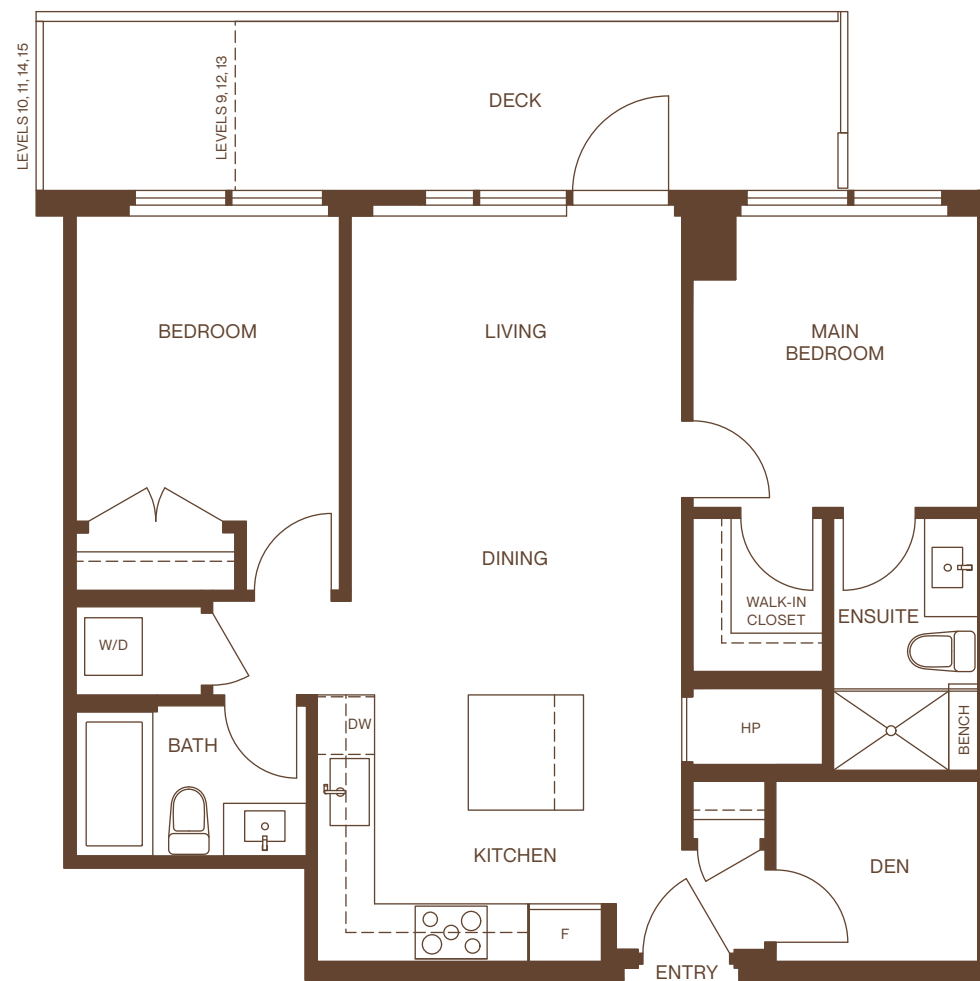


EXETER HALL

E

2 Bedroom + Den
2 Bathroom

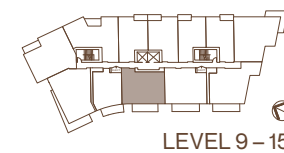
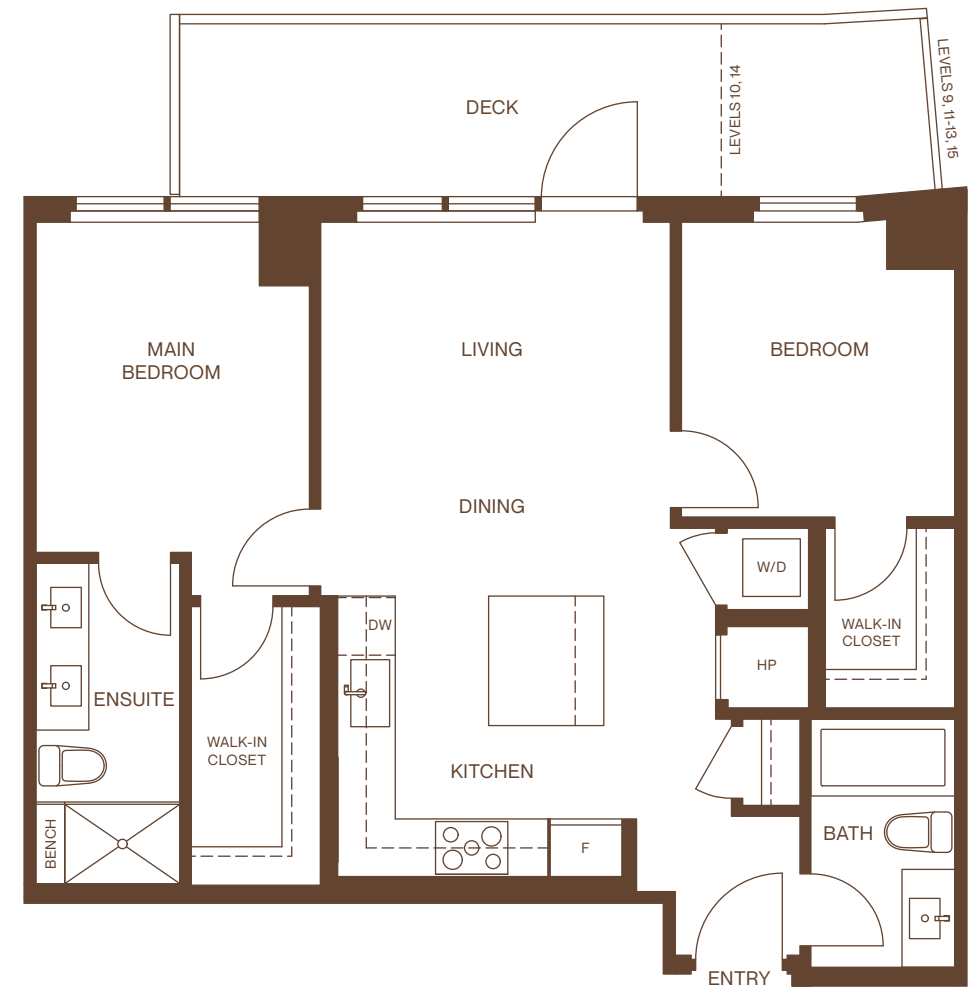
Approx: 865 SF



E1

2 Bedroom
2 Bathroom

Approx: 818 SF

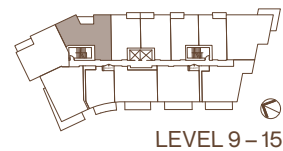
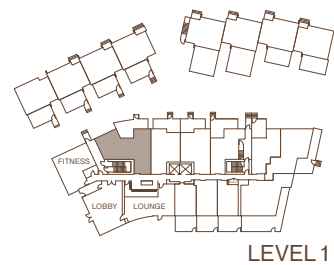
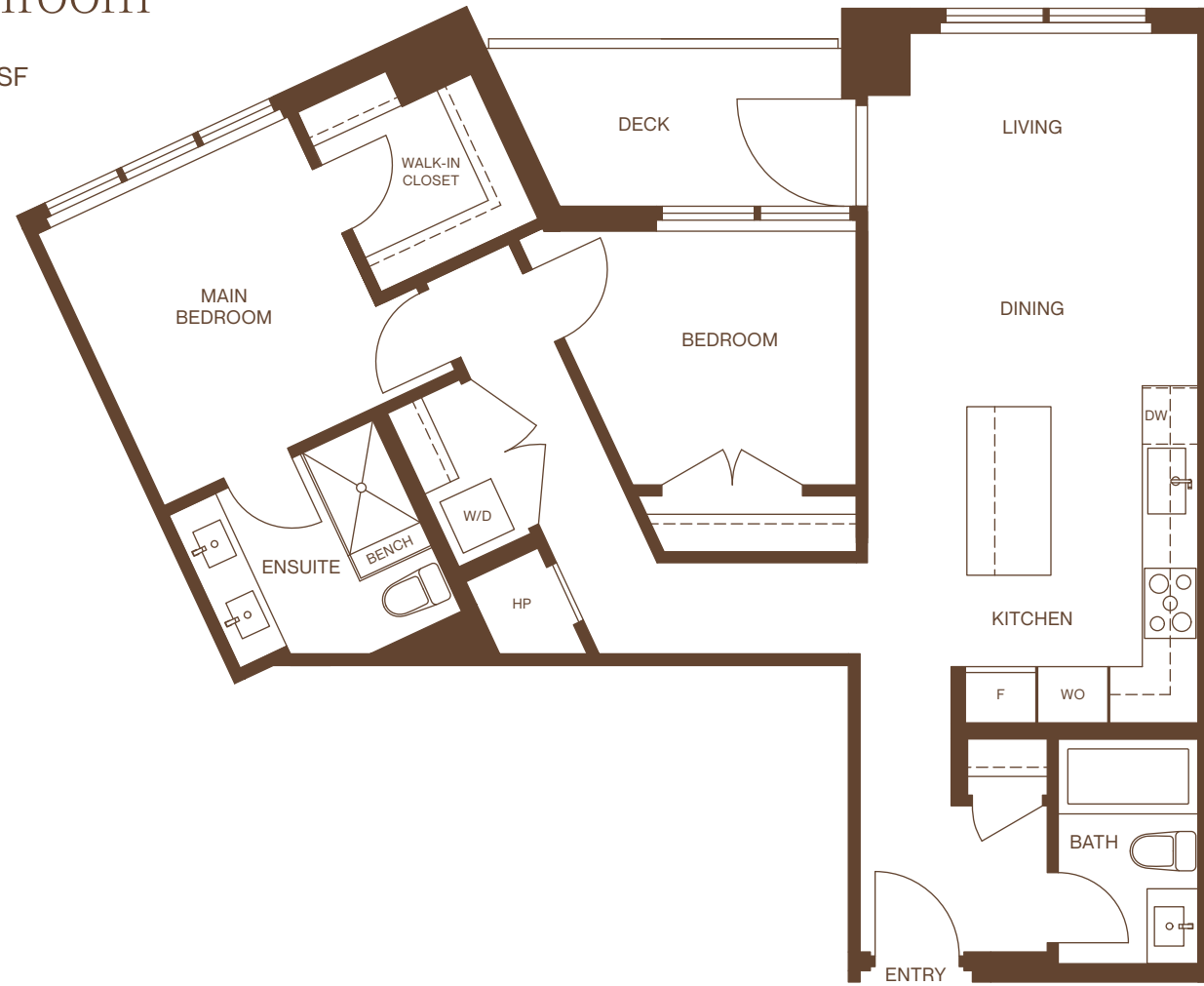


EXETER HALL

E2

2 Bedroom
2 Bathroom

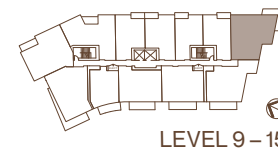
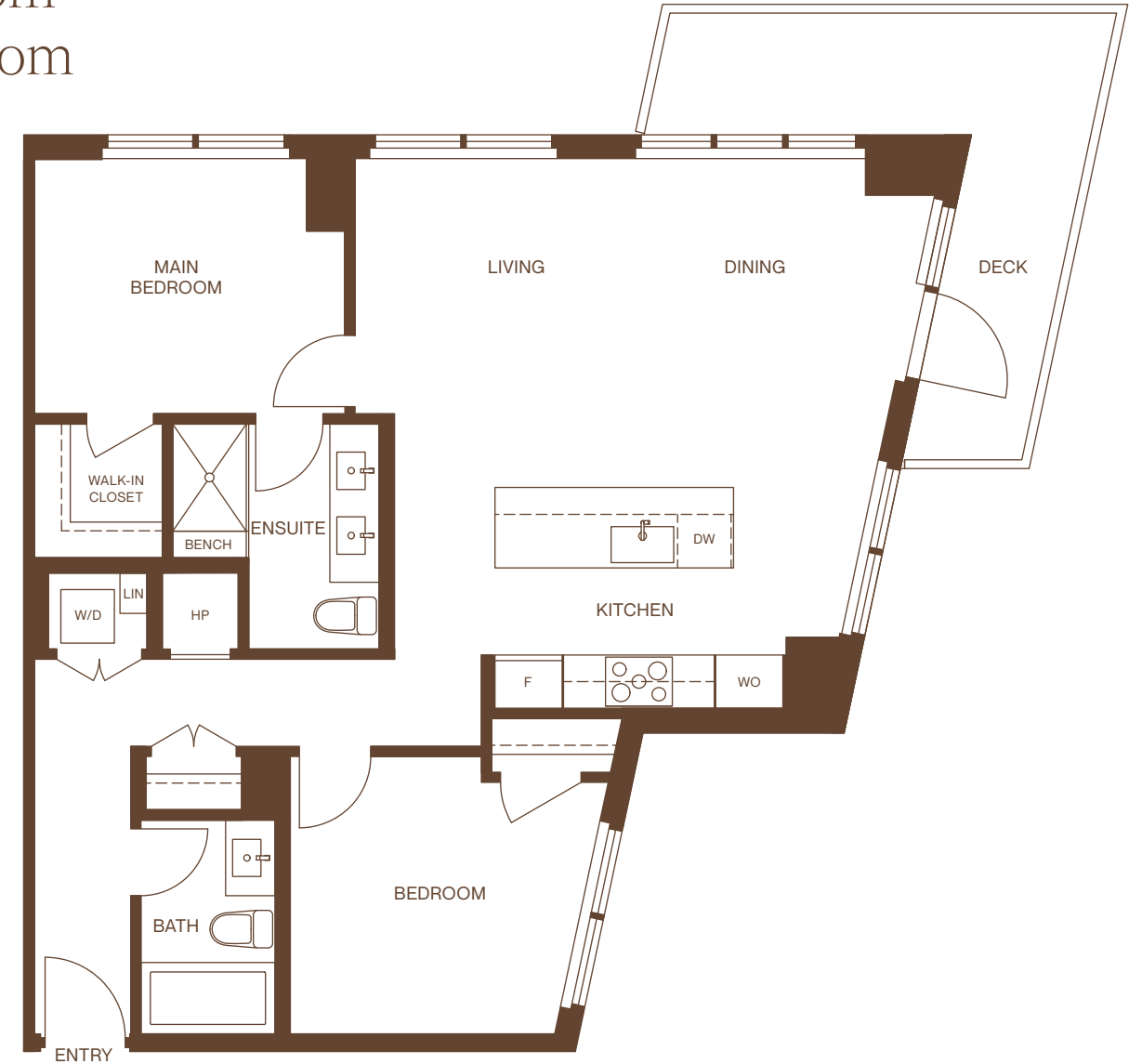
Approx: 928 SF



F

2 Bedroom
2 Bathroom

Approx: 978 SF

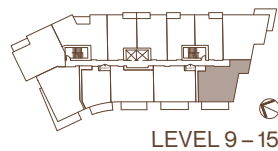
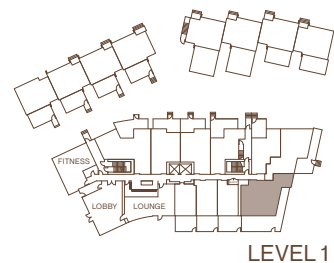
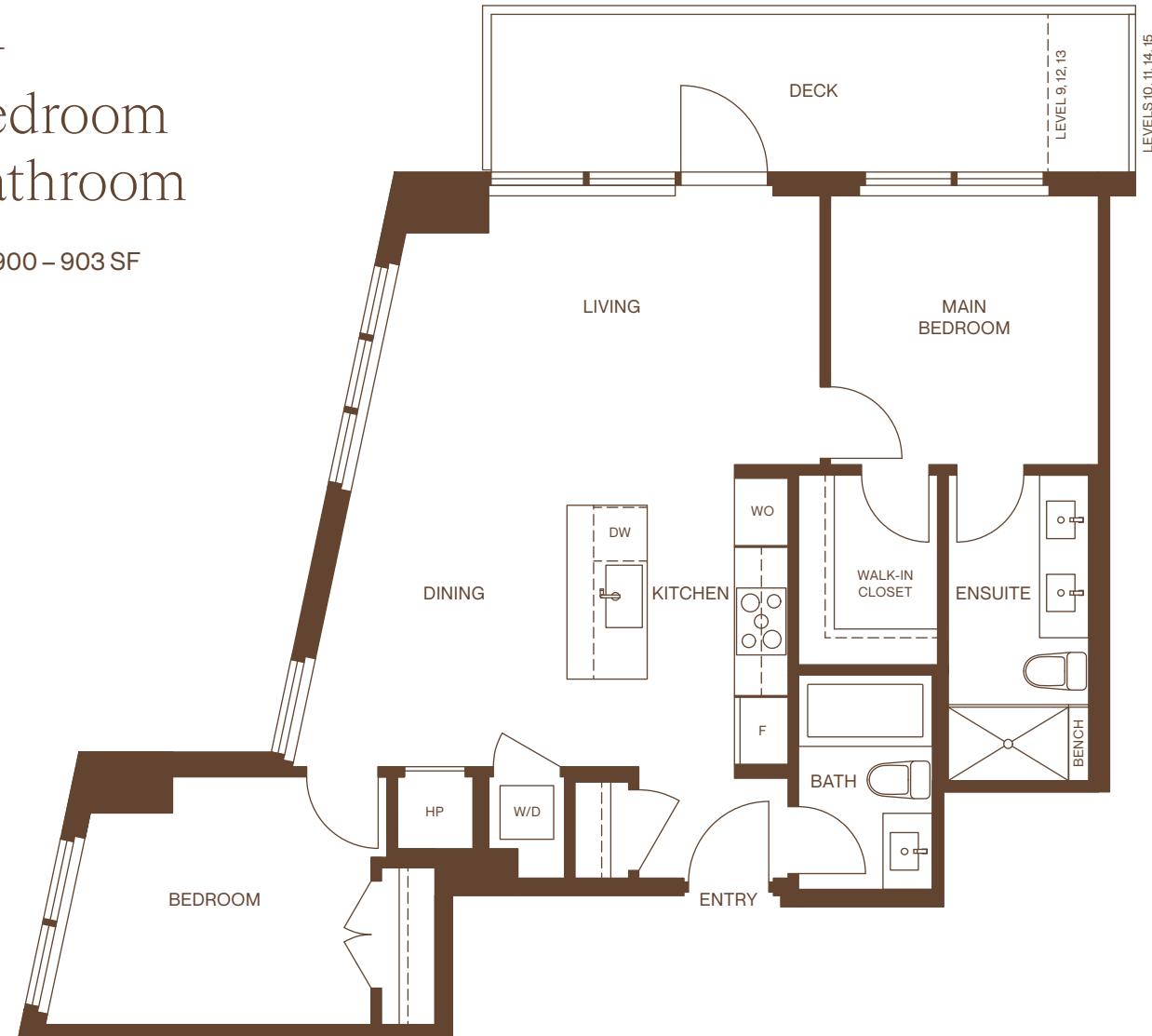


EXETER HALL

F1

2 Bedroom
2 Bathroom

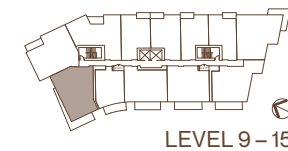
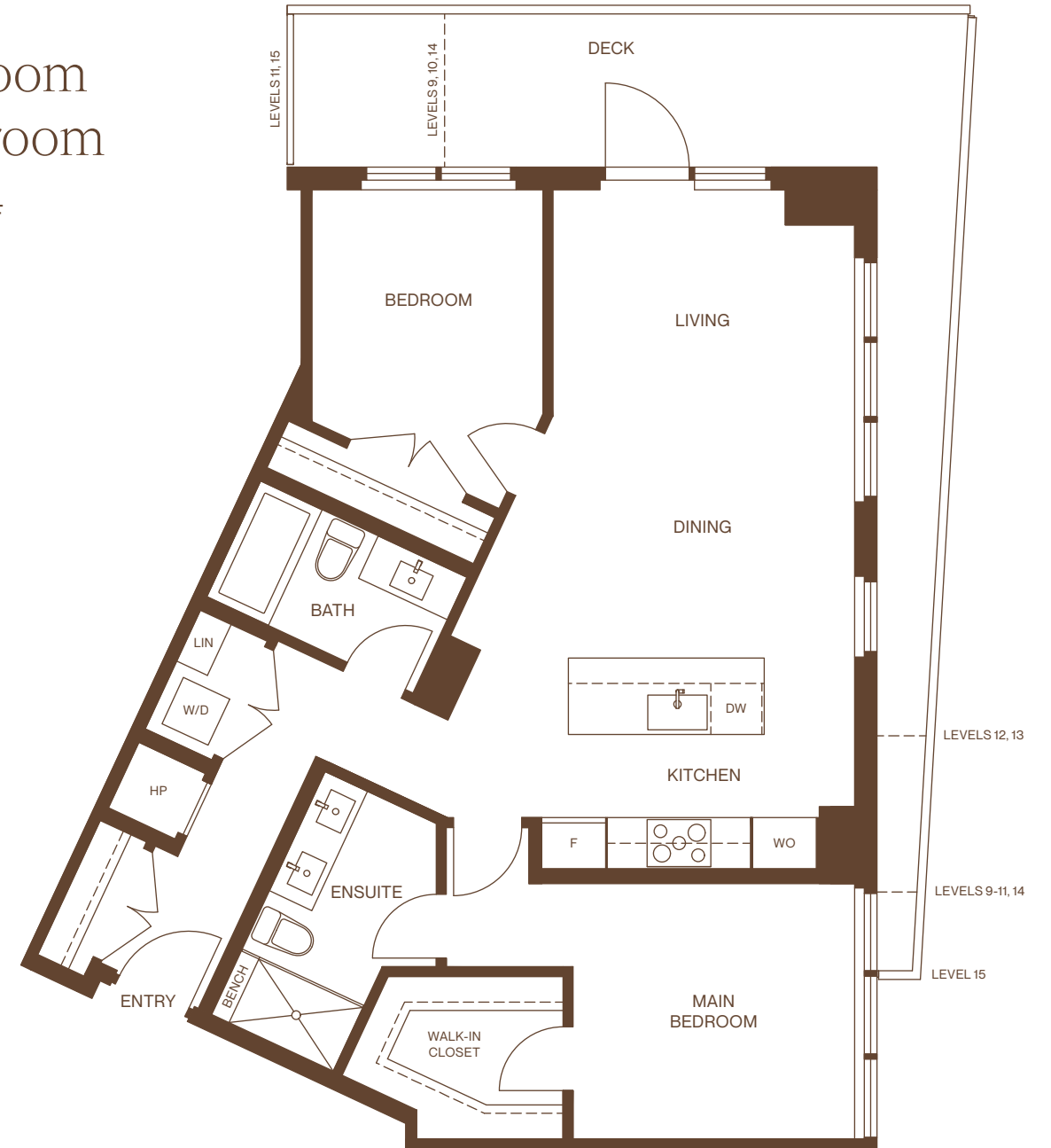
Approx: 900 – 903 SF



F2

2 Bedroom
2 Bathroom

Approx: 1,016 SF

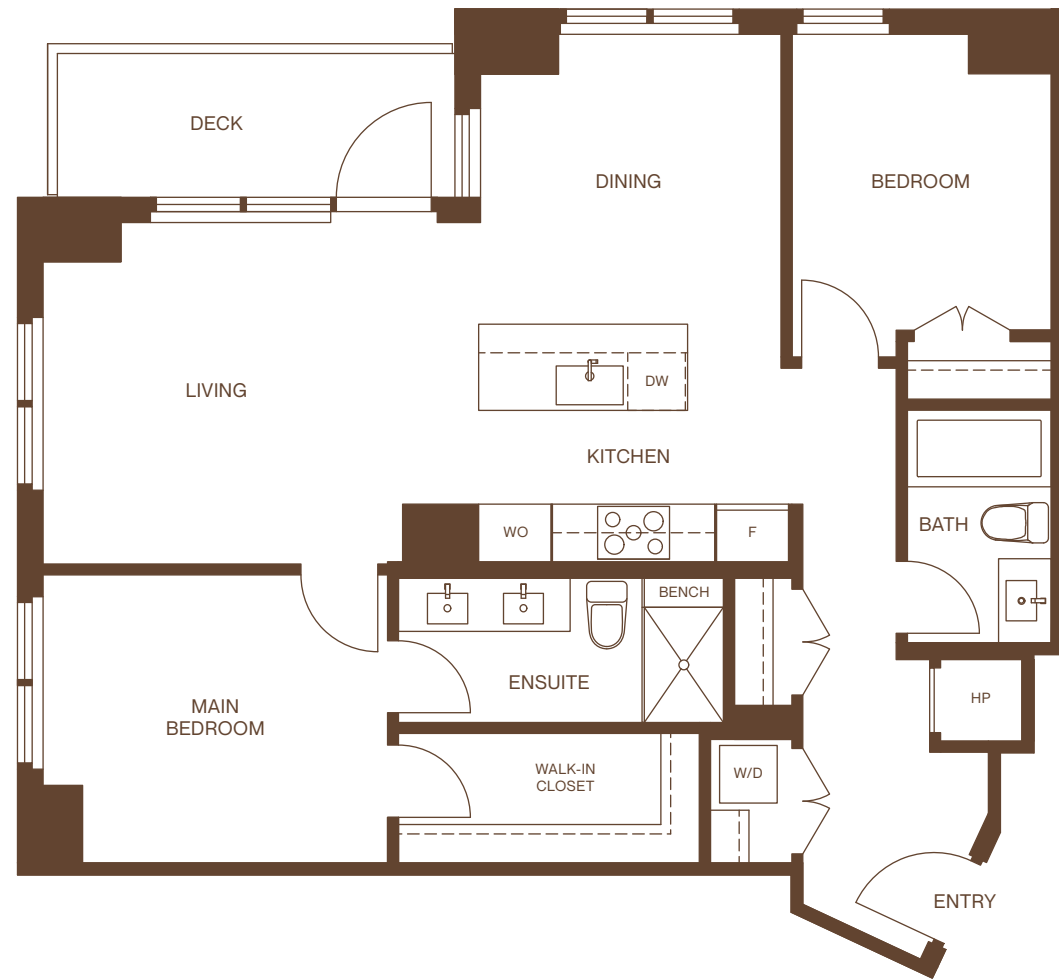


EXETER HALL

F3

2 Bedroom
2 Bathroom

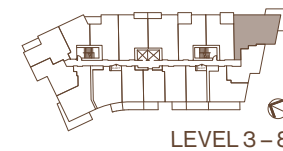
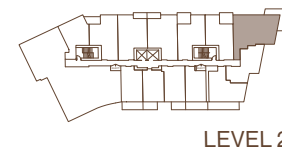
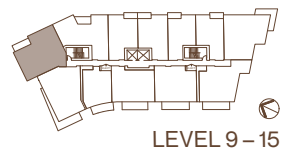
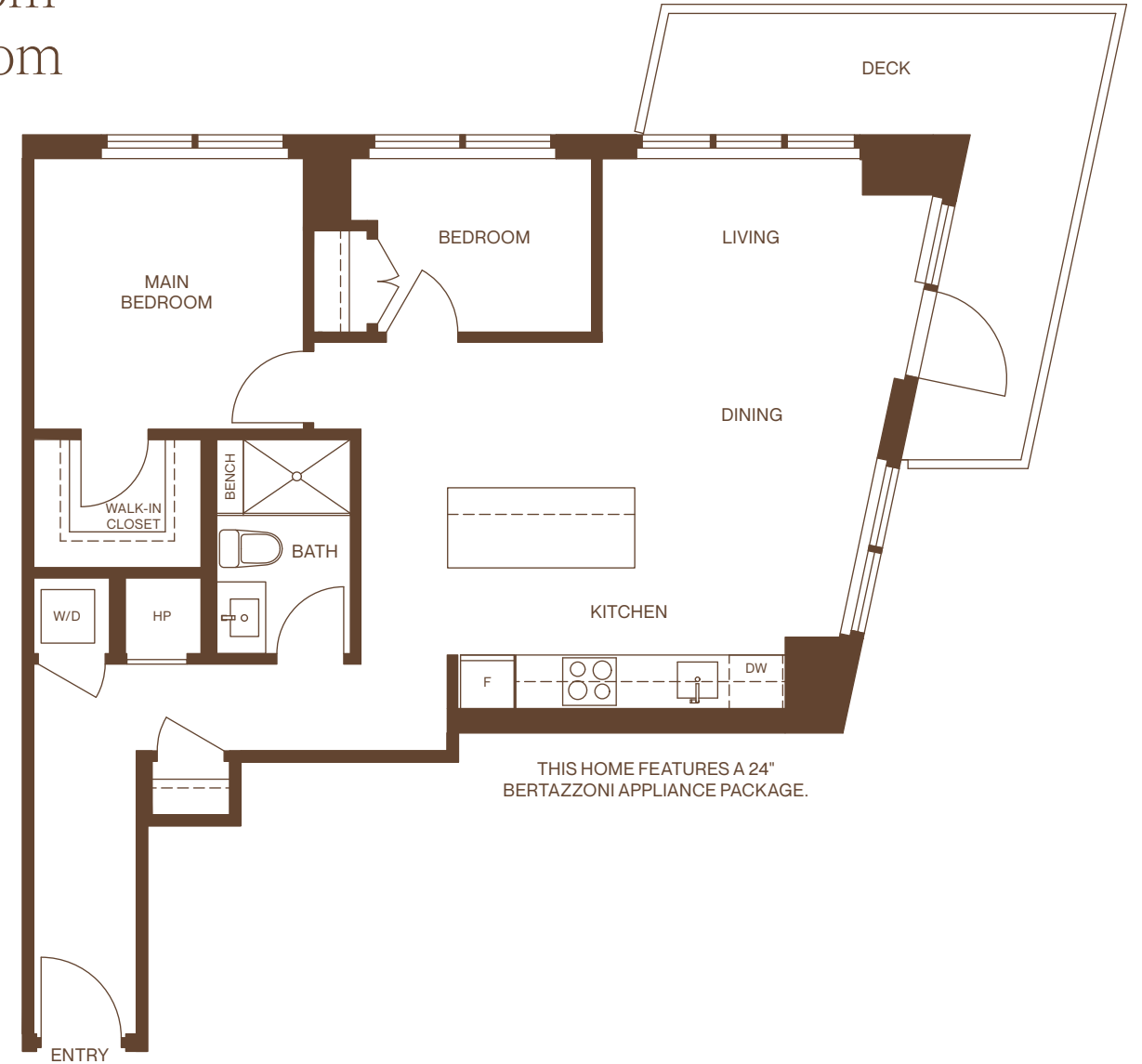
Approx: 984 SF



F4

2 Bedroom
1 Bathroom

Approx: 804 SF

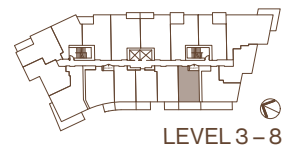
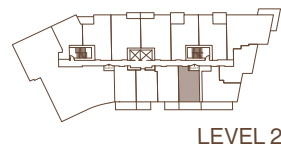
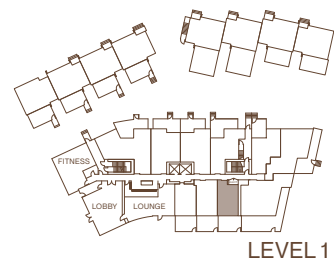
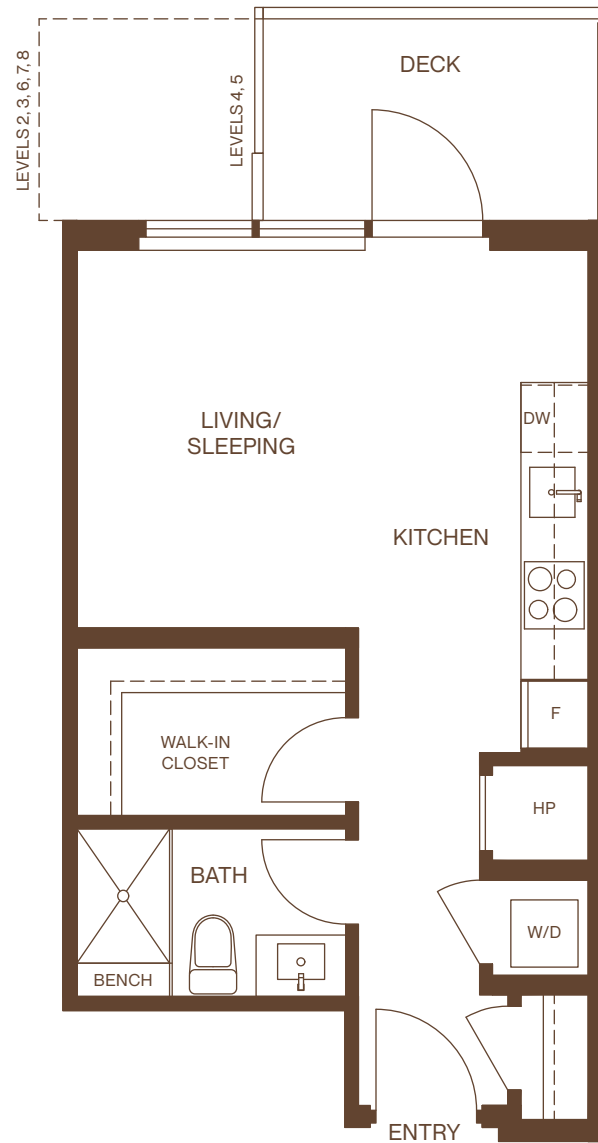


EXETER HALL

S

Studio
1 Bathroom

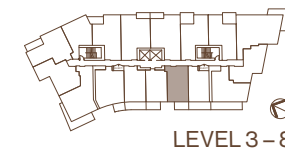
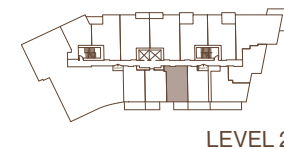
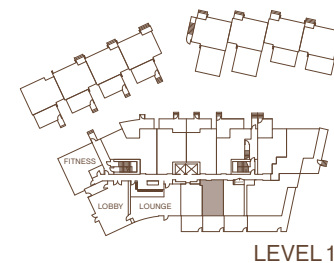
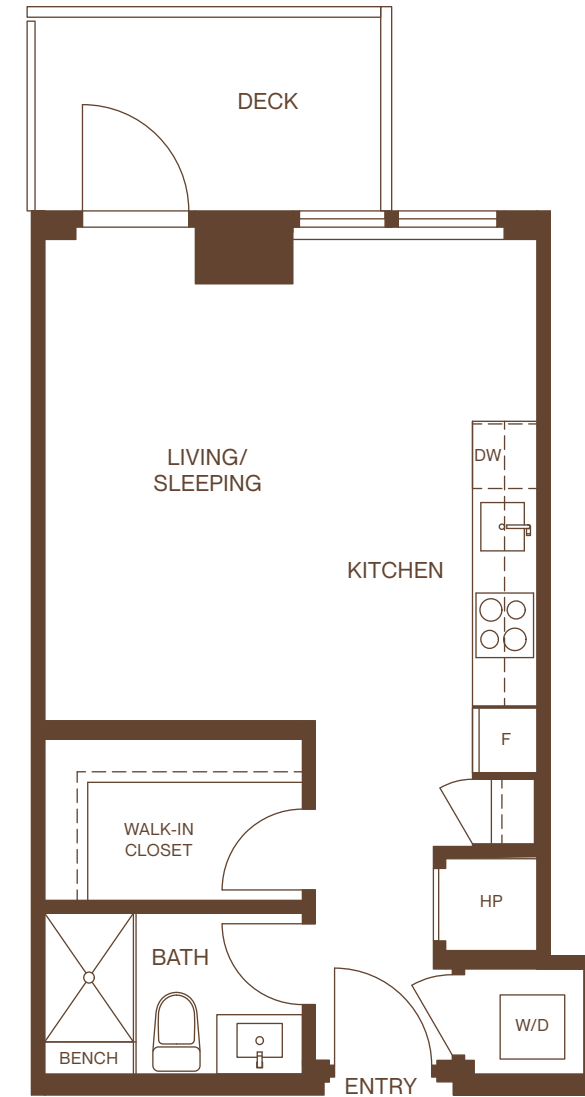
Approx: 427 SF



S1

Studio
1 Bathroom

Approx: 442 SF

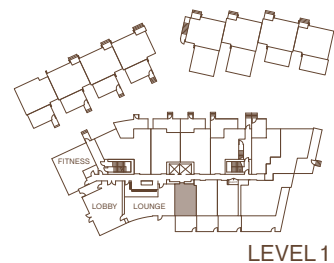
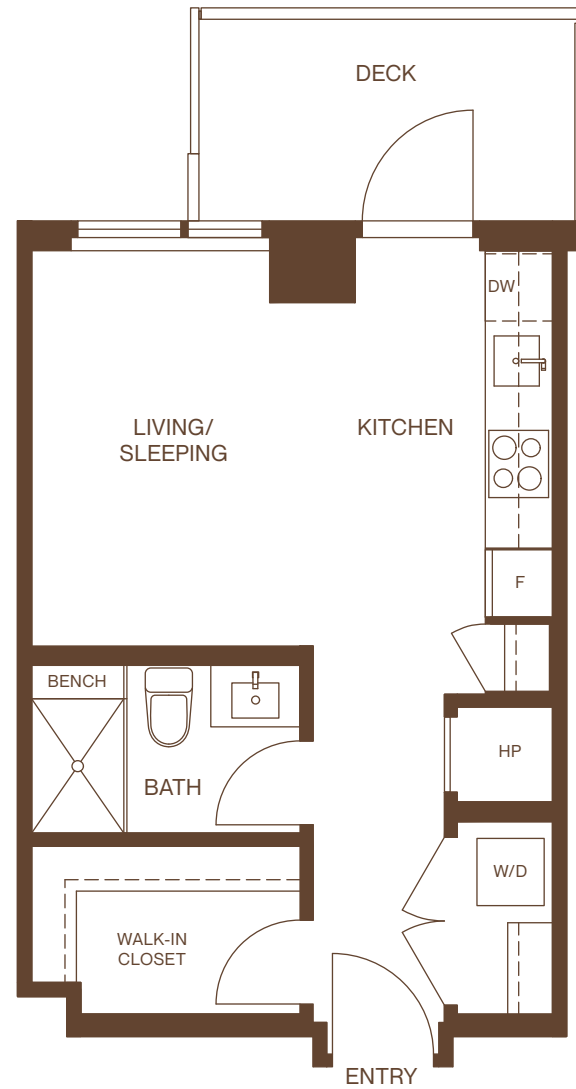


EXETER HALL

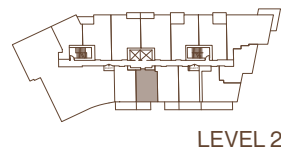
S2

Studio
1 Bathroom

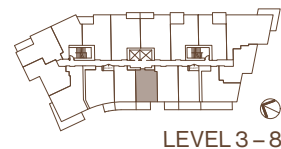
Approx: 393 SF



LEVEL 1



LEVEL 2

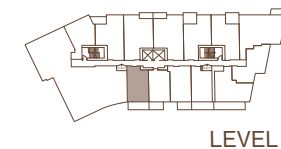
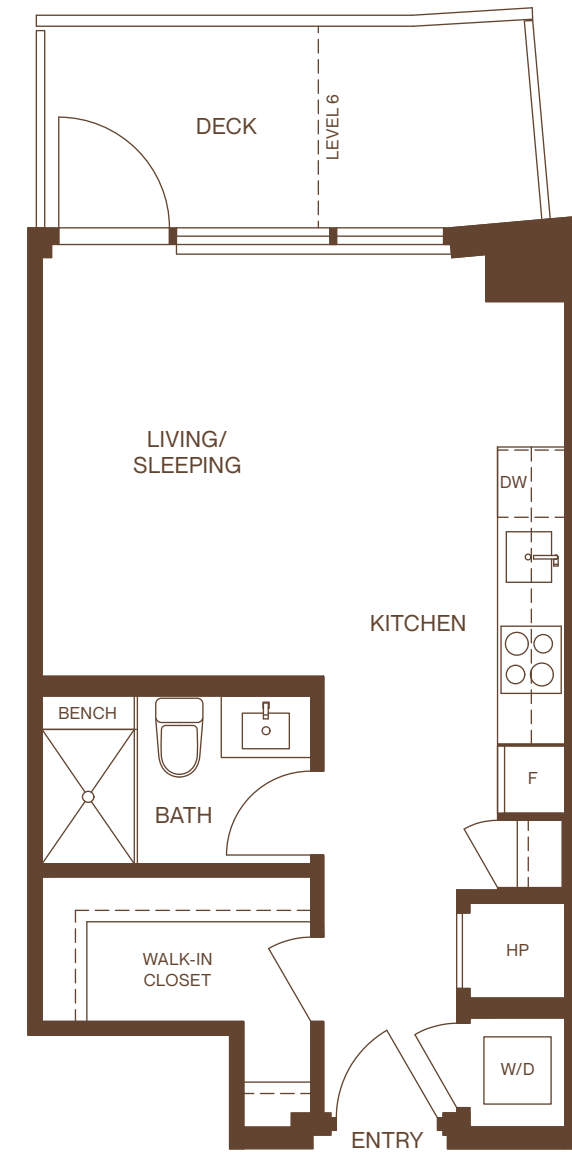


LEVEL 3-8

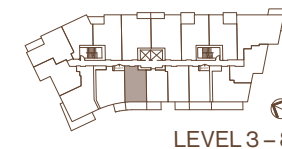
S3

Studio
1 Bathroom

Approx: 426 SF



LEVEL 2



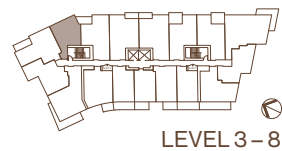
LEVEL 3-8

EXETER HALL

S4

Studio
1 Bathroom

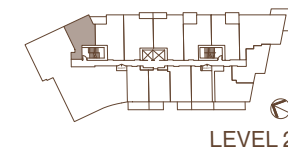
Approx: 445 SF



S4 Home 211

Studio
1 Bathroom

Approx: 445 SF



MODERN LIVING AMID NATURE

- Exeter Hall is a collection of apartments and cityhomes located in the heart of Wesbrook Village; near Mundell Park, UBC Farm, and Nobel Park

- Enjoy an exceptional blend of nature, culture and contemporary living close to greenspaces, the ocean, urban essentials and educational institutions of the highest quality

- Designed by GBL Architects Inc., Exeter Hall is defined by distinctive and refined West Coast contemporary exteriors enhanced by a striking entry canopy and double-height lobby to welcome you home

- Sustainability is integral to the design of the building, integrating bespoke vertical screens providing shading on the south-west facade

- An airy private park anchors the community at the corner of Gray and Ross. Thoughtfully designed by landscape architects Hapa Collaborative, the forecourt has seating, an open lawn, and a children's play area

- Enjoy easy access to UBC's beautiful greenway network and multitude of exceptional amenities, including the Chan Centre for the Performing Arts, UBC Aquatic Centre, Museum of Anthropology, Beaty Biodiversity Museum and more

CONTEMPORARY INTERIORS

- All tower suites feature a modern wood veneer entry door and a custom address plaque

- Main living areas offer up to 9'0" over-height ceilings

- Maintain a desired interior environment in any season with an in-suite heat pump system, easily adjusted inside your home

- Entry areas are artfully illuminated by subtle recessed pot lights

- Premium engineered wood flooring throughout living spaces and bedrooms creates a foundation of comfort and style

- Two designer-selected colour schemes, Sand and Cloud, offer customization to suit your style and furniture

- A walk-in closet features custom shelving, drawers and lighting to keep your wardrobe organized (floorplan specific)

- Expansive low-E glazed windows provide light-filled interiors and views of the surrounding greenery, North Shore mountains, or the Salish Sea while contributing to energy efficiency

- A generous balcony or patio expands your living space into the outdoors (floorplan-specific)

CHEF-READY KITCHENS

- Your thoughtfully designed kitchen will inspire you to discover new favourite dishes and host memorable gatherings

- Custom natural wood or matte white cabinetry with LED under-cabinet lighting and soft-closing drawers provide significant storage in style

- Refined engineered stone countertops are complemented by an impressive full-height engineered stone backsplash

- Contemporary Bertazzoni appliances for home plan series S, A-D and F4 include:

- 24"-wide gas cooktop and electric wall oven
- 24"-wide dishwasher integrated into custom cabinetry
- 24"-wide refrigerator integrated into custom cabinetry
- One-bedroom and studio homes feature Panasonic over-the range hood fan and microwave combination

- Stylish, high-quality Bertazzoni appliances for two-bedroom home plans except F4 include:

- 30"-wide five-burner gas cooktop and electric wall oven
- 24"-wide dishwasher integrated into custom cabinetry
- 30"-wide refrigerator with an ice maker integrated into custom cabinetry
- Dual-speed, slim-style ventilation hood fan
- Panasonic microwave with trim kit integrated into cabinetry

- Meal prep and clean-up are easy with a stylish 30" stainless undermount sink (18" single sink for home plans A-D, F4 and S), single-lever faucet in polished chrome with pull-out spray handle, and a dual roll-out recycling station

SOOTHING BATHROOMS

- Freshen up in the serene main ensuite, featuring 24" x 24" porcelain tiles, imported engineered stone countertops, hotel-inspired mirrors with built-in storage and LED lighting, and floating-style cabinetry

- A European-style ensuite shower system features a ceiling-mounted rain shower head, a handheld wand, frameless glass enclosure and integrated bench seating in ensuites

- Conserve water with sleek dual-flush water closets

SMART BUILDING

- As a Polygon TELUS Residential Smart Building, the homes at Exeter Hall come with a series of technological features including keyless entry, smart home automation and more for residents to enjoy elevated living

- Stay in shape with Exeter Hall's in-building fitness studio, and relax in the residential lounge

- Building concierge takes care of the fine details for you

CONVENIENT DETAILS

- All homes are equipped with a USB-C electrical outlet in the kitchen for your digital convenience

- 24" in-suite stacking washer and dryer make laundry effortlessly convenient

- Roller shades on all windows offer added privacy and easy control over natural light

- A conveniently located secure parcel delivery system makes receiving packages hassle-free

- Accent lighting and designer millwork on every level provide an elevated ambience

- Inquire with the sales team about upgraded features in the penthouse residences and cityhomes

SECURITY AND COMFORT

- Security proximity readers protect Exeter Hall's main entry points, including the parkade, lobbies and other key locations

- All ground-level homes include a security system

- Tower elevators enable floor access for residents only

- Underground parkade is equipped with emergency alert buttons for added peace of mind

- Digital recording cameras in the parkade, lobby and mailbox area offer additional assurance

- Each suite entry is built with a door viewer and integral locking system with reinforced doorframe

- Hard-wired smoke detectors and monitored fire sprinklers installed in all homes and common areas

- Comprehensive warranty protection by Travelers Insurance Company of Canada, including coverage for:

- Materials and labour (2 years)
- Building envelope (5 years)
- Structural defects (10 years)

- Steel-reinforced concrete construction provides outstanding durability for the West Coast climate

- Dedicated after-sales service by Polygon's renowned Customer Service team

- Level 2 rough-in for EV parking at every stall (contact sales staff for details)

- Repair bikes in a dedicated work area and store them in a secure storage locker with outlets

- Dog wash for your furry friends

CITYHOMES AND PENTHOUSE FEATURES

- Upgraded 8' entry doors and main floor ceilings up to 9' in cityhomes and 10' in penthouses

- Engineered wood flooring throughout living spaces and bedrooms creates a foundation of comfort and style

- Rich marble finishes throughout your main ensuite and powder room

- Retreat to a spa-like ensuite with a tile base spa shower

- Convenient hose bibs on cityhome patios

- BBQ gas outlet installed on cityhome patios and penthouse decks for hosting gourmet feasts for family and friends

- Penthouse residences feature private garages (home specific)

- Cityhomes offer patios and immediate access to neighbouring walking trails

- Premium-quality Miele appliances for penthouses and cityhomes include:

- 36"-wide gas cooktop
- 30"-wide electric wall oven
- 36"-wide refrigerator with ice maker integrated into custom cabinetry
- 24"-wide dishwasher integrated into custom cabinetry
- 24"-wide wine fridge to keep your beverages at an optimal temperature
- Dual-speed, slim-style ventilation hood fan
- Miele microwave with trim kit integrated into cabinetry
- Motorized blinds in penthouse homes

Building it right since 1980.

The quality homes at Exeter Hall are built with care by Polygon Exeter Homes Ltd. With over four decades of homebuilding in British Columbia, the Polygon family of companies has built more than 34,000 homes throughout the Lower Mainland, from concrete high-rises and wood-frame condominiums to townhomes and single-family communities. During that time, Polygon has earned the trust of thousands of families by committing to quality design, sound construction and exceptional customer service.



EXETER HALL



778-5138868